



## TK Series Cluster Filter Housings

Multi-element stainless steel cartridge filter housings provide a simple, flexible and convenient method of combining cartridge filter elements into a single pressure vessel to achieve high flow rates and efficient removal of suspended solids from feedwaters.

There are three different vessel types available in 304 grade stainless steel with 316L grade stainless steel available as an option. The **TK Standard** series have working pressures up to 500kPa (max 950kPa) with a V-clamp style lid. The **TKH** high pressure series have working pressures up to 500kPa (max 1500kPa) with a 4-bolt lid. The **DL** series are high flow rate vessels with a swing clamp type lid for ease of use and working pressures to 950kPa.



### Applications

High flow rate systems for sediment removal from bore water, potable mains water, purified waters, beverages, oil and syrup media.

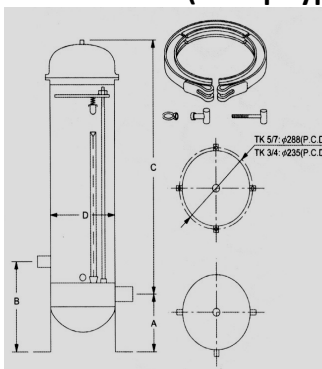
### Features

Top opening vessel cap is designed for easy opening by hand (no tools are required) to change filter elements.

### Filter element suitability

All industry standard filters with nominal OD 2.5"/63mm with 22.5mm inner core may be used. Includes: double open end, 222/flat, 222/fin, 226/flat, 226/fin types.

### TK Series Standard Filter Vessel (Clamp type)



**Filter sizes:** 2.5"x10"/20"/30"/40"

**Filter numbers:** 5 or 7

**Working Pressure** <500kPa

**Material** ANSI 304 / 316

**O-Ring** EPDM

**Max. Pressure** 950kPa

**Surface Treatment** Electropolished

*System flow rates will vary according to the type of filter element selected and maximum pressure drop allowable for these filter elements*

### TK Standard Series Vessel Dimensions

Model	A outlet port	B inlet port	C height	D diameter	Filter size	Port Thread
TK-5	120	280	505	230	10" x 5	1½"
TK-10	120	280	770	230	20" x 5	1½"
TK-7	120	280	505	230	10" x 7	1½"
TK-14	120	280	770	230	20" x 7	2"~3"
TK-21	120	280	1025	230	30" x 7	1½"
TK-28	120	280	1280	230	40" x 7	1½"

*Pure Water. Simple Solutions*



ROtek Australia Pty Ltd  
11/38 Corporate Boulevard  
Bayswater VIC 3153

Phone +61 3 9738 2488  
Mobile 0430 397 644  
email: [rotekaustralia@bigpond.com](mailto:rotekaustralia@bigpond.com)

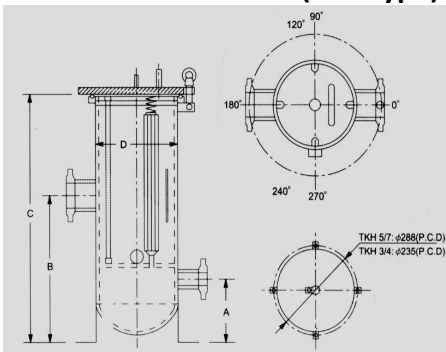
Web site: [www.rotekaustralia.com.au](http://www.rotekaustralia.com.au)

RTA 14-026



# TK Series Cluster Filter Housings

## TKH Series High Pressure Filter Vessel (bolt type)

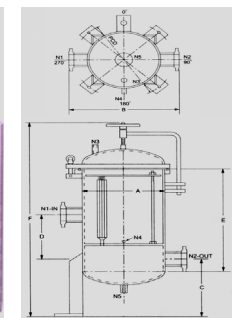
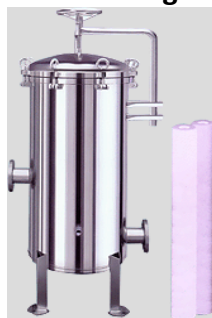


**Filter sizes:** 2.5"x10"/20"/30"/40"  
**Filter numbers:** 7  
**Working Pressure:** <500kpa  
**Material:** ANSI 304 / 316  
**O-Ring:** EPDM/Viton/PTFE  
**Max. Pressure:** 1500kpa  
**Surface Treatment:** Electropolished  
*System flow rates will vary according to the type of filter element selected and maximum pressure drop allowable for these filter elements*

## TKH Series Vessel Dimensions

Model	A outlet port	B inlet port	C height	D diameter	Filter size	Port Thread
TKH-10	120	280	520	230	10" x 7	1½"
TKH-20	120	280	815	230	20" x 7	1½"
TKH-30	120	280	1070	230	30" x 7	1½"
TKH-40	120	280	1325	230	40" x 7	1½"

## DL Series High Flow Rate Filter Vessels



**Filter sizes:** 2.5"x30"/40"  
**Filter numbers:** 8-158  
**Working Pressure:** <950kpa  
**Material:** ANSI 304 / 316/316L  
**O-Ring:** EPDM, optional Viton, PTFE  
**Surface Treatment:** Electropolished/acid cleaned  
*System flow rates will vary according to the type of filter element selected and maximum pressure drop allowable for these filter elements*

## DL Series Vessel Dimensions

Model	Filter	A	B	N1N2	C	D	E	F	N3	N4	N5	PCD
DL8-10	30"	300	500	2"~4"(F)	350	350	1000	1660	1/4	3/4"	3/4"	410
	40"	300	500	2"~4"(F)	350	350	1250	1910	1/4	3/4"	3/4"	410
DL11-18	30"	406	600	3"~4"(F)	350	350	1000	1680	1/4	3/4"	3/4"	516
	40"	406	600	3"~4"(F)	350	350	1250	1930	1/4	3/4"	3/4"	516
DL19-27	30"	486	700	3"~4"(F)	350	350	1000	1695	1/4	1"	1"	609
	40"	486	700	3"~4"(F)	350	350	1250	1945	1/4	1"	1"	609
DL28-35	30"	560	760	4"(F)	350	350	1000	1705	1/4	1"	1"	704
	40"	560	760	5"~6"(F)	400	350	1350	2035	1/4	1"	1"	704
DL36-44	30"	600	800	4"(F)	350	350	1100	1730	1/4	1"	1"	750
				6"(F)	400	350	1200	1810				
	40"	600	800	4"(F)	350	350	1350	1980	1/4	1"	1"	750
				6"(F)	400	350	1450	2060				
DL45-70	30"	762	960	4"(F)	350	350	1100	1730	1/4	1"	1"	960
				6"(F)	400	350	1200	1810				
	40"	762	960	4"(F)	350	350	1350	1980	1/4	1"	1"	960
				6"(F)	400	350	1450	2060				
DL80-100	30"	900	1100	6"~8"(F)	450	350	1200	1970	1/2	1.5"	1.5"	1100
	40"	900	1100	6"~8"(F)	450	350	1450	2220				
DL110-136	30"	1000	1200	8"(F)	450	350	1200	1970	1/2	2"	2"	1300
				10"(F)	500	350	1300	2120				
	40"	1000	1200	8"(F)	450	350	1450	2260	1/2	2"	2"	1300
				10"(F)	500	400	1600	2500				

Pure Water. Simple Solutions



ROTek Australia Pty Ltd  
 11/38 Corporate Boulevard  
 Bayswater VIC 3153

Phone +61 3 9738 2488  
 Mobile 0430 397 644  
 email: [rotekaustralia@bigpond.com](mailto:rotekaustralia@bigpond.com)

Web site: [www.rotekaustralia.com.au](http://www.rotekaustralia.com.au)

RTA 14-026



## TK Series Cluster Filter Housings

### Applications

Cluster filter housings may be used singly, interconnected with other housings to give progressive filtration stages, downstream from bag filter stages or automatic backwash media filter systems or where the bulk of suspended solids have been removed and a finer grade of filtration is required.



#### Automotive

Filtration of pre-treatment bath, filtration of E-Coat, topcoat and clearcoat, primer, paint ring line filters, parts cleaning fluids, drawing compounds, lubricants, metal working fluids and pump intake filters.



#### Chemical

Catalyst recovery, removal of pipe scale, polishing of aqueous process fluids, alkalis, acids and solvents, filtration of emulsions and dispersions, gel removal from resins. Activated carbon or catalyst removal in the fine chemicals industry is a typical example of a demanding application in chemical processing.



#### Electronics

Wafer and chip processing, electronic etching baths, photo-chemical polishing and high-purity water filtration and prefiltration of various membrane filtration processes to improve their cost effectiveness.



#### Food and Beverage

Polishing filtration of wine, spirits and beer, removal of particles from edible oils, removal of carbon black from cellulose, slime removal in gelatins, liquid sugar, thick juice, corn syrup polishing, starch processing, milk processing and soft drinks.



#### Metal Working

Filtration of hydraulic oil, pre-treatment system filtration, precious metal recovery, metal working fluids, and drawing compounds. Parts cleaning machines use our filter bags for minimizing residual dirt on parts.

*Pure Water. Simple Solutions*



ROtek Australia Pty Ltd  
11/38 Corporate Boulevard  
Bayswater VIC 3153

Phone +61 3 9738 2488  
Mobile 0430 397 644  
email: [rotekaustralia@bigpond.com](mailto:rotekaustralia@bigpond.com)

Web site: [www.rotekaustralia.com.au](http://www.rotekaustralia.com.au)

RTA 14-026





# TK Series Cluster Filter Housings

## Applications



### Petrochemicals

Filtration of lube oils, fuel additives, enhanced oil recovery, filtration of amine solutions, filtration of glycol fluids, gas purification processes, distillation and cracking processes, amine washers, off-shore filter stations, oil drilling and injection fluids.



### Paint and Lacquer

Removal of agglomerates, removal of paint coagulates, solvent filtration, removal of storage contaminants, filling lines, and paint mixing lines, monomer purification.



### Pharmaceutical

Recovery of expensive active ingredients, catalyst recovery, active carbon purification and removal, filtration of gelatins, hormones, vitamin extracts, polishing of herbal mixtures, protein removal from plasma, filtration of saline solutions.



### Resins, Plastics, Inks and Coatings

Oil and polymer filtration, dispersions, polymerization batches, resins for can coatings, plastics compounding, printing ink, plastics processing, paper coatings, high purity ink-jet fluid filtration.



### Water Treatment

Bore water filtration, water treatment plants, silt removal, pipe scale removal, sand and algae removal from sea water, ion exchange resin recovery, calcium deposit removal, filtration of chemicals used for water treatment, dust removal from cooling tower installations. Surface water filtration is an area traditionally dominated by cartridge filtration. Staged application for bottled water, ice and pharmaceutical manufacturing.

*Pure Water. Simple Solutions*



ROtek Australia Pty Ltd  
11/38 Corporate Boulevard  
Bayswater VIC 3153

Phone +61 3 9738 2488  
Mobile 0430 397 644  
email: [rotekaustralia@bigpond.com](mailto:rotekaustralia@bigpond.com)

Web site: [www.rotekaustralia.com.au](http://www.rotekaustralia.com.au)

RTA 14-026

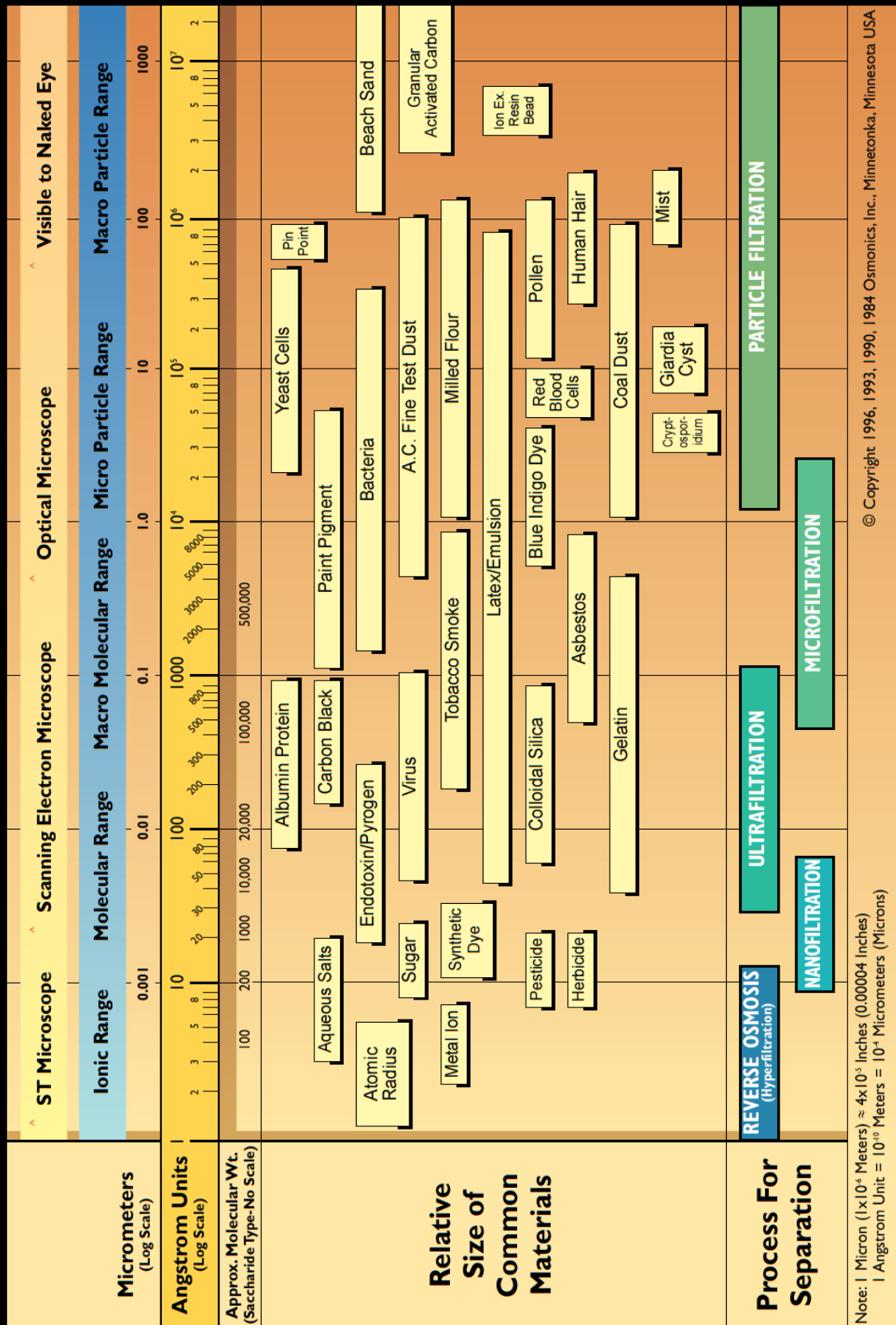


# TK Series Cluster Filter Housings



## OSMONICS

## The Filtration Spectrum



© Copyright 1996, 1993, 1990, 1984 Osmonics, Inc., Minnetonka, Minnesota USA



ROtek Australia Pty Ltd  
 11/38 Corporate Boulevard  
 Bayswater VIC 3153

Web site: [www.rotেকaustralia.com.au](http://www.rotেকaustralia.com.au)

*Pure Water. Simple Solutions*

Phone +61 3 9738 2488  
 Mobile 0430 397 644  
 email: [rotek.australia@bigpond.com](mailto:rotek.australia@bigpond.com)

RTA 14-026